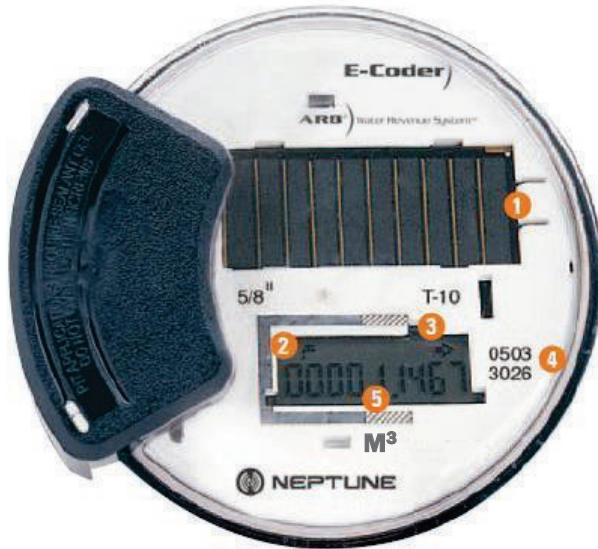


E-Coder[®] Dial Face and Icons

- Solar Cell 1
- Leak Icon 2
- Flow Indicators 3
- Date of Manufacture 4
- LCD Display 5



SOLAR CELL
Located at the top of the E-coder, supplies power for the LCD panel (light activated.)



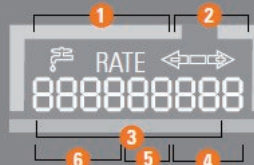
FLOW INDICATOR
Shows the direction of flow through the meter:
ON Water in use.
OFF Water not in use.
FLASHING Water is running slowly.
(-) Reverse flow.
(+) Forward flow.



LEAK INDICATOR
Displays a possible leak:
OFF No leak indicated.
FLASHING Intermittent leak indicates that water has been used for at least 50 of the 96 15-minute intervals during a 24-hour period.
ON CONTINUOUSLY Indicates water use for all 96 15-minute intervals during a 24-hour period.

RATE

RATE OF FLOW
Average flow rate is displayed every six seconds on LCD display.



LCD DISPLAY
Nine-digit LCD displays the meter reading in billing units of measure: U.S. gallons, cubic feet, Imperial gallons, or cubic metres.

- 1 E-Coder Basic Reading/Customary 6-digit remote reading
- 2 Customary sweep hand digits
- 3 E-Coder PLUS Reading (8-digit remote reading)
- 4 Testing units used for diagnostics
- 5 Extended reading units
- 6 Customary billing units